

# Board of Crawford County Commissioners

## Commissioners' Journal

2016, **NINETY-FOURTH** MEETING

CRAWFORD COUNTY COURTHOUSE, COMMISSIONERS' BOARD ROOM

Girard, KS **Tuesday, December 20, 2016, 10:00 AM**

The Crawford County Board of Commissioners met pursuant to Kansas Statutes

Annotated Chapter 19, Article 2, Section 18 in due and regular session with open doors.

Commissioner Tom Moody served as the presiding officer.

Commissioners Carl Wood and Jeff Murphy were in attendance.

County Clerk Don Pyle and County Counselor Jim Emerson were seated with the Board.

Chairman Moody led the pledge of allegiance.

### **UNDER THE HEADING BUSINESS FROM A PREVIOUS MEETING CONSENT AGENDA**

**On motion (16-469)** of Commissioner Wood and the second of Commissioner Moody that the consent agenda be approved including:

1. Approval of the **December 16, 2016** minutes of the Board of County Commissioners.

Yeas: Commissioners Moody, Murphy and Wood

Nays:

Present but not voting:

Absent or not voting:

**The motion prevailed and the consent agenda was approved.**

### **SIGNING OF MOTIONS**

The County Clerk presented the following motions for Commissioners' signatures:

Motion 16	459	That the consent agenda be approved including: Approval of the December 13, 2016 minutes and Approval of the accounts payable warrant numbers 569965 to 570209 and account payable add on #111111 dated December 15, 2016 in the total amount of \$428,933.35
Motion 16	460	To approve the 2017 Contract for Services between Crawford County, Kansas, and the Crawford County Convention and Visitors Bureau and the Pittsburg Area Chamber of Commerce and authorize the Chairman to sign
Motion 16	461	To approve the 2017 Museum Grants Fund Proposal as presented

## Board of Crawford County Commissioners

Motion 16	462	To approve the 2017 Convention and Visitors Bureau proposed budget as presented
Motion 16	463	To Deposit the Funds from the sale of Equipment on the Purple Wave Website into the Equipment Reserve Fund to pay for a Ditching Machine
Motion 16	464	To recess this open session and go into a closed executive session for a period of not more than 15 minutes to discuss matters that would be Deemed Privileged in the Attorney-Client relationship and to include the Board of County Commissioners and County Counselor Jim Emerson
Motion 16	465	To recess this open session and go into a closed executive session for a period of not more than 15 minutes to discuss matters involving Non-Elected Personnel and to include the Board of County Commissioners, Zoning Director Troy Graham, and County Counselor Jim Emerson
Motion 16	466	To recess this open session and go into a closed executive session for a period of not more than 15 minutes to discuss matters involving Non-Elected Personnel and to include the Board of County Commissioners, County Clerk Don Pyle, and County Counselor Jim Emerson
Motion 16	467	To recess this open session and go into a closed executive session for a period of not more than 30 minutes to discuss matters involving Non-Elected Personnel and to include the Board of County Commissioners, County Counselor Jim Emerson and Road & Bridge Director Liz Hart
Motion 16	468	To recess this open session and go into a closed executive session for a period of not more than 30 minutes to discuss matters involving Non-Elected Personnel and to include the Board of County Commissioners and County Counselor Jim Emerson

### UNDER THE HEADING NEW BUSINESS

#### MESSAGES FROM OTHER GOVERNMENTAL ENTITIES

**Item One:** Ms. Becky Gray, City of Pittsburg Director of Housing and Community Development, and Mr. Skip Motsenbocker with Pointe Royale Development addressed the housing development. Ms. Gray stated she has been working on the creation of new housing developments in the City of Pittsburg. Mr. Motsenbocker concentrates on the low end of the housing market. Mr. Motsenbocker stated that he is seeking a letter of support for his application for tax credits to the Kansas Housing Resources Corp. It was discussed that 29 houses in Pittsburg and 6 houses in Girard are being planned. Mr. Motsenbocker stated has been working with the city for over a year and he walked the Commissioners through the presentation of the proposed project. These all brick homes would be 2 bedrooms, 2 bath, 2 car garage homes. Mr. Motsenbocker stated that 9 homes would be built at the McGeorge site and 20 homes at the Edwards site in Pittsburg and 6 homes would be built in Girard. There will an extensive waiting list for these homes and the need is continuing to grow. There was a discussion of the qualifications for this program. It was estimated that the construction would be completed by April of 2018. The company is responsible for maintenance and management during the lease period.

## **Board of Crawford County Commissioners**

The commissioners asked Mr. Emerson to draft a letter of support and bring it back for their signatures.

### **PUBLIC HEARINGS AND OPENING OF ANNOUNCED BIDS**

**Item One:** Opening of rock bids. Ms. Liz Hart, Road and Bridge Coordinator presented the Commissioner with the bids for rock. Ms. Hart stated 2 bids were received. The first bid opened was from Midwest Minerals, Pittsburg #5 Quarry, Farlington Quarry and McCune Quarry. Ms. Hart read the bid to the Commissioners and stated it included their scale test. The second bid opened was from Mulberry Limestone, Pittsburg Quarry and their Englevale Quarry. Ms Hart read the bids out loud. Ms. Hart will send the bids to Dennis Meier at Triad Engineering to review and they will be brought back with his recommendations.

# Board of Crawford County Commissioners

Page 3 of 6

## BID FORM "LIMESTONE AGGREGATE MATERIALS"

Firm Name: Midwest Minerals, Inc. (1<sup>st</sup> Thru 4<sup>th</sup> Quarter, 2017)

Address: \_\_\_\_\_ Phone No: \_\_\_\_\_

City: \_\_\_\_\_ State: \_\_\_\_\_ Zip Code: \_\_\_\_\_

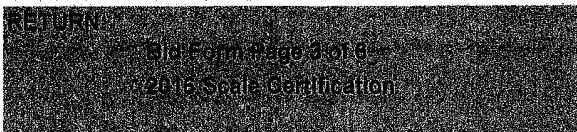
Quarry No./Name: McCune #12 Location Description (Section, T, R) 25-31-21 Cherokee

Product	1(NW)	2(NE)	3(SE)	4(SW)
1. AB-3 Est. Tonnage	5,000	20,000	20,000	20,000
Bid \$/Ton			\$5.10	\$5.10
2. Roadstone Est. Tonnage	10,000	3,000	2,000	6,000
Bid \$/Ton			5.10	5.10
3. Screened Roadstone Est. Tonnage	500	500	500	500
Bid \$/Ton			7.00	7.00
4. Roadbase Rock Est. Tonnage	1,000	500	500	500
Bid \$/Ton			5.10	5.10
5. Lateral Rock Est. Tonnage	100	100	200	100
Bid \$/Ton			7.00	7.00
6. Chips Est. Tonnage	500	1,500	3,500	500
Bid \$/Ton			11.00	11.00

Quarry No./Name: \_\_\_\_\_ Location Description (Section, T, R) \_\_\_\_\_

Product	1(NW)	2(NE)	3(SE)	4(SW)
1. AB-3 Est. Tonnage	5,000	20,000	20,000	20,000
Bid \$/Ton				
2. Roadstone Est. Tonnage	10,000	3,000	2,000	6,000
Bid \$/Ton				
3. Screened Roadstone Est. Tonnage	500	500	500	500
Bid \$/Ton				
4. Roadbase Rock Est. Tonnage	1,000	500	500	500
Bid \$/Ton				
5. Lateral Rock Est. Tonnage	100	100	200	100
Bid \$/Ton				
6. Chips Est. Tonnage	500	1,500	3,500	500
Bid \$/Ton				

I/We of \_\_\_\_\_ do hereby agree to furnish the above described materials in accordance with the specifications of the bid document enclosed herein and at the above specified price/ton



Signed: [Signature]

Title: President

Date: 12/20/16

# Board of Crawford County Commissioners

Page 3 of 6

## BID FORM "LIMESTONE AGGREGATE MATERIALS" (1<sup>st</sup> Thru 4<sup>th</sup> Quarter, 2017)

Firm Name: Midwest Minerals, Inc.

Address: 709 N. Locust

Phone No: 620-231-8120

City: Pittsburg

State: KS

Zip Code: 66762

Quarry No./Name: Pittsburg, #5

Location Description (Section, T, R) 30-30-24 Crawford

	Product		1(NW)	2(NE)	3(SE)	4(SW)
1. AB-3	Est. Tonnage		5,000	20,000	20,000	20,000
	Bid \$/Ton				\$5.10	\$5.10
2. Roadstone	Est. Tonnage		10,000	3,000	2,000	6,000
	Bid \$/Ton				5.10	5.10
3. Screened Roadstone	Est. Tonnage		500	500	500	500
	Bid \$/Ton				7.00	7.00
4. Roadbase Rock	Est. Tonnage		1,000	500	500	500
	Bid \$/Ton				5.10	5.10
5. Lateral Rock	Est. Tonnage		100	100	200	100
	Bid \$/Ton				7.00	7.00
6. Chips	Est. Tonnage		500	1,500	3,500	500
	Bid \$/Ton		10.25	10.25	10.25	10.25

=====

Quarry No./Name: Farlington #4

Location Description (Section, T, R) 31-27-24 Crawford

	Product		1(NW)	2(NE)	3(SE)	4(SW)
1. AB-3	Est. Tonnage		5,000	20,000	20,000	20,000
	Bid \$/Ton		\$5.24	\$5.24		
2. Roadstone	Est. Tonnage		10,000	3,000	2,000	6,000
	Bid \$/Ton		5.24	5.24		
3. Screened Roadstone	Est. Tonnage		500	500	500	500
	Bid \$/Ton		8.00	8.00		
4. Roadbase Rock	Est. Tonnage		1,000	500	500	500
	Bid \$/Ton		5.24	5.24		
5. Lateral Rock	Est. Tonnage		100	100	200	100
	Bid \$/Ton		8.00	8.00		
6. Chips	Est. Tonnage		500	1,500	3,500	500
	Bid \$/Ton					

I/We of Midwest Minerals, Inc. do hereby agree to furnish the above described materials in accordance with the specifications of the bid document enclosed herein and at the above specified price per ton.



Signed: [Signature]

Title: President

Date: 12/20/16

# Board of Crawford County Commissioners

Page 3 of 6

## BID FORM "LIMESTONE AGGREGATE MATERIALS"

Firm Name: Mulberry Limestone (1<sup>st</sup> Thru 4<sup>th</sup> Quarter, 2017)  
Address: 325 N. 260<sup>th</sup> Phone No: 620-764-3337  
City: Mulberry State: Ks Zip Code: 66756  
Quarry No./Name: Pittsburg Quarry Location Description (Section, T, R) 30-30-24

Product	1(NW)	2(NE)	3(SE)	4(SW)
1. AB-3	5,000	20,000	20,000	20,000
Est. Tonnage				
Bid \$/Ton			4.45	4.45
2. Roadstone	10,000	3,000	2,000	6,000
Est. Tonnage				
Bid \$/Ton			4.45	4.45
3. Screened Roadstone	500	500	500	500
Est. Tonnage				
Bid \$/Ton			6.65	6.65
4. Roadbase Rock	1,000	500	500	500
Est. Tonnage				
Bid \$/Ton			4.75	4.75
5. Lateral Rock	100	100	200	100
Est. Tonnage				
Bid \$/Ton			6.85	6.85
6. Chips	500	1,500	3,500	500
Est. Tonnage				
Bid \$/Ton				

Quarry No./Name: <u>Englevale Quarry</u>		Location Description (Section, T, R) <u>25-28-24</u>			
	<u>Product</u>	<u>1(NW)</u>	<u>2(NE)</u>	<u>3(SE)</u>	<u>4(SW)</u>
1. AB-3	Est. Tonnage	<u>5,000</u>	<u>20,000</u>	<u>20,000</u>	<u>20,000</u>
	Bid \$/Ton		<u>5.45</u>		
2. Roadstone	Est. Tonnage	<u>10,000</u>	<u>3,000</u>	<u>2,000</u>	<u>6,000</u>
	Bid \$/Ton		<u>5.45</u>		
3. Screened Roadstone	Est. Tonnage	<u>500</u>	<u>500</u>	<u>500</u>	<u>500</u>
	Bid \$/Ton		<u>7.95</u>		
4. Roadbase Rock	Est. Tonnage	<u>1,000</u>	<u>500</u>	<u>500</u>	<u>500</u>
	Bid \$/Ton		<u>5.75</u>		
5. Lateral Rock	Est. Tonnage	<u>100</u>	<u>100</u>	<u>200</u>	<u>100</u>
	Bid \$/Ton		<u>7.80</u>		
6. Chips	Est. Tonnage	<u>500</u>	<u>1,500</u>	<u>3,500</u>	<u>500</u>
	Bid \$/Ton		<u>10.50</u>		

I/We of Mulberry Limestone do hereby agree to furnish the above described materials in accordance with the specifications of the bid document enclosed herein and at the above specified price/ton.

RETURN: Bid Form Page 3 of 6  
2016 Scale Certification

Signed: Matt Blessant  
Title: Owner/President  
Date: 12-19-16

Matt Blessant from Mulberry Limestone spoke about a quarry out of Cherokee County and when it is opened would like to bid the McCune quadrant. The quarry should be opened in January. The Commissioners discussed this with Mr. Blessant.

**MESSAGES FROM ELECTED OFFICIALS**  
**MESSAGES FROM APPOINTED OFFICIALS**

## Board of Crawford County Commissioners

**Item One:** Mr. Troy Graham, Zoning Administrator, regarding a call he received from Kevin Hite with KDHE about a tire amnesty program starting next year. He will need to write a grant application. The Commissioners asked him to speak to Mr. Medina with KDHE and make sure it does not interfere with the Orphan Tire Program.

Bureau of Waste Management  
Curtis State Office Building  
1000 SW Jackson St., Suite 320  
Topeka, KS 66612-1366



Phone: 785-296-1600  
Fax: 785-559-4252 or 785-559-4253  
kdhe.bwmweb@ks.gov  
www.kdheks.gov/waste

Susan Mosler, MD, Secretary

Department of Health & Environment

Sam Brownback, Governor

December 13<sup>th</sup>, 2016

Troy Graham  
Crawford County  
111 East Forest Street  
Girard, Kansas 66743

**RE: Zika Virus Mitigation Tire Amnesty for Spring of 2017**

Mr. Graham,

I spoke with you on December the 9<sup>th</sup> regarding the funding available for a tire amnesty program aimed at reducing the risk of the Zika Virus. By reducing the number of waste tires in populated areas, the number of possible mosquito breeding grounds can be minimized.

I had stated during our phone conversation that I would be sending out draft copies of the program contract and supporting documents. The documents enclosed here, are in fact, the final documents that the program will adhere to. Please review these items and sign the contracts if the terms are agreeable. If the terms are not agreeable, please feel free to contact me to discuss any changes. Please return the signed contracts to this office so that final authorization can be completed. Your participation in this program is appreciated.

Please remember that no funding can be dispersed until final authorization has been completed. Therefore, do not make any expenditures in regards to this program before an authorization notice from this office has been received.

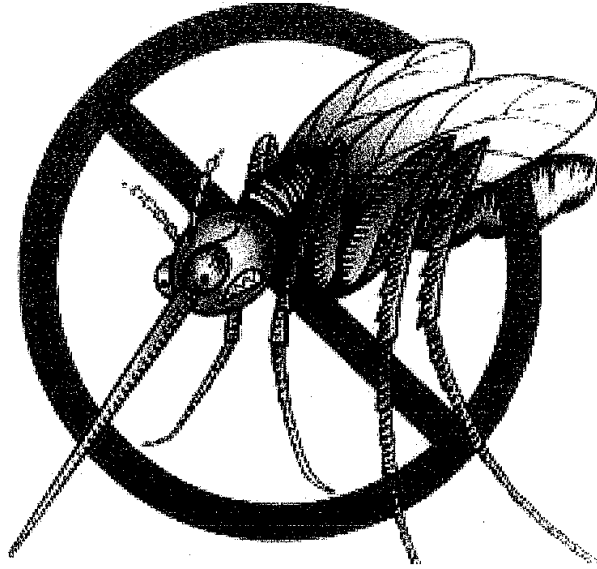
Please do not hesitate to contact me at (785) 296-1757 or by email at [kevin.heit@ks.gov](mailto:kevin.heit@ks.gov) if there are any questions regarding this program.

Regards,

Kevin Heit  
Environmental Specialist  
Compliance, Assistance, & Enforcement Unit

Enclosure (s): Zika Virus Mitigation Grant for Spring of 2017 Program Overview  
(2) Contracts (to be signed and returned to KDHE)  
Contractual Provisions Attachment  
Attachment B, Statement of Work

Cc: Zika Virus 2017 File



Zika Virus Mitigation Grant for  
Spring of 2017



# **Board of Crawford County Commissioners**

## **Waste Tire Advertisement and Cleanup Plan for Management and Disposal of Waste Tires to Eliminate Mosquito Breeding Sites**

prepared by the Bureau of Waste Management  
December 7<sup>th</sup>, 2016

### **Scope of the Program**

Waste tires present an excellent breeding habitat for mosquitos and therefore the more waste tires that can be removed from the environment the fewer mosquito breeding sites that will be available. Ideally, all random accumulations of waste tires in residential areas should be eliminated to reduce risks; however, greatest risks exist in areas of highest population density. Therefore, proposed abatement projects will focus on the highest risk communities.

### **Expenditures for the Program**

Each participating community will be allowed \$1000 for the purpose of advertising the “tire amnesty event”. Some examples of allowable advertisements would be fliers, printings included in local newspapers, and notifications on utility bills.

Each community will be allowed \$10,000 for the proper disposal by a permitted waste tire disposal service. The tires must be properly disposed of by the end of the contract term to receive reimbursement for this program.

### **Waste Tire Abatement**

BWM will partner with local units of government to develop and host tire amnesty events in select high risk communities. For the purposes of this project, “tire amnesty events” means that the general public (not businesses that generate waste tires) may drop tires off for free at a community center for a very limited period of time. These events will focus upon population centers in the state until all abatement funds are consumed (approximately \$99,000). The goal is to carry out all amnesty events this spring (February 15<sup>th</sup> through May 15<sup>th</sup>). Any funds not expended will be used in the fall of 2017. All sites will be limited to \$11,000 each, to be able to cover as many communities as possible.

Commissioner Wood asked about the billboard signs and Mr. Graham is still working on it. Mr. Graham stated that Mike Davis from Miami County could come up any Tuesday or Friday and Commissioner Wood asked Mr. Graham to set it up.

**Item Two:** Mr. Greg Hite spoke about the dump truck specs and bid sheets and stated that all of the road foremen have looked the bid sheet over. There was a discussion of the bid sheets and which businesses will be sent bid sheets. The bid sheet is dated January 2 and will need to be returned by January 17.

# Board of Crawford County Commissioners

Crawford County  
Road and Bridge Department  
111 E. Forest St.  
Girard, Kansas 66743  
PH. 620-724-8725 - FAX 620-724-6841

## MEMO

To: Dump Truck Bidders

From: Greg Hite  
Shop Foreman

Date: January 2, 2017

Subject: Dump Truck Bids (3)

### INVITATION TO BID

Crawford County Road & Bridge, Girard, Kansas, will accept Sealed Bids until 10:00 a.m., Tuesday, January 17<sup>th</sup>, 2017, at which time they will be opened and read aloud, for the purchase of Three (3) New Tandem Axle Dump Trucks.

Bids to be submitted to Crawford County Clerk's Office:

CRAWFORD COUNTY CLERK  
P.O. BOX 249  
Girard, Kansas 66743

All shall be clearly labeled: "DUMP TRUCK BIDS"

The Bidder shall include the Make, Model and Year of Vehicle being bid and the complete Manufacturer's Specifications of the unit proposed to be furnished.

The Bid shall reflect the list price of the Unit being bid, FOB Crawford, Kansas, Governmental Discount, delivery time from date of order and any warranty information.

The Board of Commissioners reserves the right to reject any or all bids, and to Award Bid based on what is considered to be in the best interest of Crawford County.

# Board of Crawford County Commissioners

## Crawford County Road and Bridge Department

### SPECIFICATIONS FOR THREE (3) NEW TANDEM AXLE DUMP TRUCKS

1. GVWR: 62,000
2. Engine: 370 Hp. Diesel with 1250 Torque
3. Block Heater – 1500 Watt/115 Volt
4. Wheelbase: 208" to accept a 15" Dump Bed
5. Cab to Axle: 130" to accept a 15' Dump Bed
6. Frame- Single at least 7/16" X 3 9/16" X 11 1/8"
7. 24" front frame extensions for snow plow application.
8. Axles: Front –18,000 lbs., SBA Dust Shield, With Single Steering Gear  
Back –46,000 lbs., Double Reduction Rear end, Dust Shields, driver controlled traction differential
9. Suspension – Front – 18,000# Leaf Front Suspension  
Rear - 46,000# 54" Axle spacing with a Hendrickson RT 463 type suspension.
10. Transmission: 3000 Series Allison Automatic with PTO Provision
11. Brake System: Air, Brake System with brake line air dryer with heater, Quick Disconnect fitting with hose for tire inflation kit with automatic adjusters on each wheel.  
Heavy-duty Shocks, Front  
Tires: Front – Goodyear 315/80R22.5. 20 ply  
Rear – Goodyear 11R22.5, 14 ply
12. Wheels: Front-22.5 x 12.25 10-Hub Pilot 5-Hand Steel Disc.  
Rear -22.5 x 8.25 10-Hub Pilot 5-Hand Steel Disc.
13. Fuel Tank: 100 Gallon minimum, Fuel/Water Separator w/heated bowl.
14. Day Cab: Conventional Steel
15. Batteries : 3 – Group 31 Maintenance Free 2850 CCA Threaded Stud
16. Air Cleaner : Dual Element 2-Stage
17. Extra Electrical Switch Connectors in Cab

## Board of Crawford County Commissioners

18. Grill: Stationary, Radiator mounted, silver metallic painted, plastic/aluminum with permanent mount bug deflector.
19. Mirrors: Dual SST Heater mirrors with 8" LH/RH Convex mounted under primary mirrors.
20. Hitch: Pintle Type, Air Line with Glad Hands with dust covers
21. Trailer Towing Provision at end of Frame w/ supplemental 7-way Receptacle located with primary receptacle.
22. Front & Rear Mounted Tow Hooks
23. Solid 14" Steel Front Bumper
24. Power Steering- Single Steering Gear
25. Heater, Defroster and Air Conditioner
26. Floor Mats
27. Seats: Driver & Passenger side – Air Suspension, High or Mid Back, Lumbar Support, Vinyl, dual arm rests
28. Forward Roof mounted Console and between Seat Console w/Cup Holder and Map Pocket
29. Air Cab Mounts
30. Air Horns
31. Light Package with LED Flange Mounted Stop/Turn/Tail Lights w/separate back-up Lights
32. Radio: AM/FM
33. ODO/Trip/Hour/Diagnostic/Voltage Display
34. Transmission Oil Temperature and Level Gauge
35. Truck Color: White
36. Central hydraulic System to Operate Snowplow, Spreader & Dump Body System to run off engine PTO with controls located on control tower positioned to the right of the driver seat. Quick Couplers to be located on the right hand rear of bed.
37. Henke Style Quick Hitch Truck portion of Snow plow Hitch with Tilt Operation, with Cable Controls
38. Snowplow Light Kit
39. 1 – Complete set of Service and Parts Manuals for the Truck and All Components.
40. Four Wheel Parking Brake

## Board of Crawford County Commissioners

41. All other items considered standard or necessary for proper operation of complete unit.

### **42. Bed:**

- a. 15' Bed
- b. Floor: AR 400 ¼" Thick
- c. Straight Sides made of AR500 5/32" Thick with
- d. Tail Gate: AR 450 3/16" Thick,
- e. Tail Gate Chains : 3/8" Coil Proof
- f. Nose: AR500
- g. The Dump Body will be Cross-member-less type construction
- h. All Weld will be continuous
- i. Rub Rails : Set At 35 Degrees to Shed Dirt
- j. SideBoardPocket: 8" to Accommodate Side Boards
- k. Rear Corner post shall have a 7" slope for the door.
- l. Rear Corner post shall house the recessed LED lights
- m. ½ Cab Shield
- n. 10" Asphalt Apron
- o. Single Action Hoist Cylinder with 26 Ton Lift Capacity
- p. Mud Flaps : Heavy Duty Rubber Style
- q. Color: White
- r. Tarp: Hand Operated Mesh.

### **OPTIONS**

- 1. Three (3) Henke 11' Blades with 8" cutting edge
- 2. Wireless Back-up Camera
- 3. Whelan Light Bar mounted on Cab (Re-enforced)
- 4. Electric Vinyl Tarp

**NOTE: COMPLETE MANUFACTURER'S SPECIFICATIONS OF THE UNIT PROPOSED TO BE FURNISHED, SHALL BE ATTACHED TO BIDDERS PROPOSAL.**

# Board of Crawford County Commissioners

## PROPOSAL FOR Crawford County Road and Bridge Department

Bid Proposal: Three (3) Tandem Axle Dump Trucks

Receipt Date: Tuesday, January 17<sup>th</sup>, 2016

Receipt Time: 10:00 am

## ADDENDUM

To: CRAWFORD COUNTY CLERK'S OFFICE  
P.O. BOX 249  
CRAWFORD, KANSAS 66743

**CRAWFORD COUNTY RESERVES THE RIGHT TO REJECT ANY AND ALL BIDS,  
TO WAIVE INFORMALITIES OR IRREGULARITIES IN SAID BID TO AWARD  
THE BID BASED ON WHAT THE COUNTY DEEMS TO BE IN ITS BEST  
INTEREST**

The bidder agrees to furnish the following equipment as set forth in the Minimum Specification sheet attached.

Make, Model and Year of Vehicle Bid: \_\_\_\_\_

Basic Unit Price Bid \$ \_\_\_\_\_

Less Government Discount: \$ \_\_\_\_\_

Net Unit Price Bid \$ \_\_\_\_\_

**Times Three Units**

### OPTIONS

Henke 11' Blades with 8" cutting edge \$ \_\_\_\_\_

Wireless Back-up Camera \$ \_\_\_\_\_

Whelan Light Bar mounted on Cab (Re-enforced) \$ \_\_\_\_\_

Electric Vinyl Tarp \$ \_\_\_\_\_

**TOTAL BID: \$ \_\_\_\_\_**

Warranty Terms of New Units \_\_\_\_\_ Delivery Date of New Units: \_\_\_\_\_

Company: \_\_\_\_\_

Address: \_\_\_\_\_

By: \_\_\_\_\_

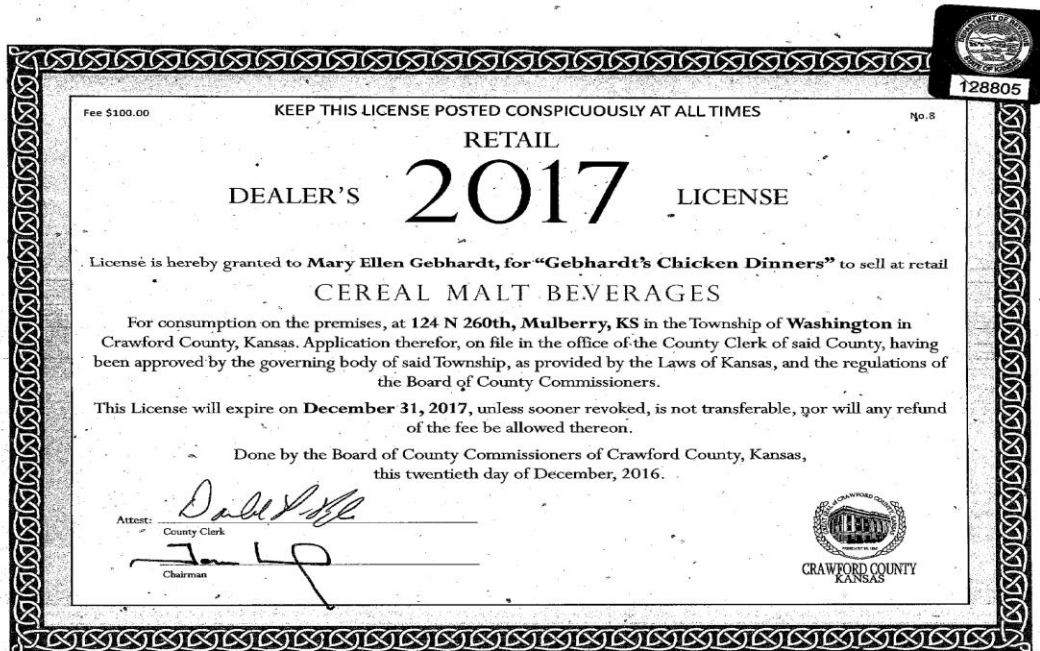
Title: \_\_\_\_\_

## MESSAGES FROM THE PUBLIC PROCLAMATION AND ORDERS OF THE BOARD NEW BUSINESS

**Item One:** County Clerk Don Pyle presented an application for a 2017 Cereal Malt Beverage License for Mary Ellen Gebhardt for "Gebhardt's Chicken Dinners", to allow them to sell cereal malt beverages for consumption on the premises. Mr. Pyle stated that

## Board of Crawford County Commissioners

notices have been sent to the Sheriff, Zoning Administrator, County Attorney and the Township Clerk and that they were given 10 days to respond and that no responses had been received.



**On motion (16-470)** of Commissioner Moody and the second of Commissioner Wood to make it known that the matter of issuing a license to the applicant(s) listed below was discussed and considered by the Board, and there being no objection filed as provided by law and the Board knowing of no reason why a license should not be issued, the board hereby issues a license to “sell at retail”, cereal malt beverages in broken case lots from the place of business as shown in the application as designated and described on the application as herein before set out, and that the County Clerk be hereby authorized and directed to execute the proper license which shall be signed by the Chairman of the Board of County Commissioners and the County Clerk of Crawford County, Kansas.

### 2017 Cereal Malt Beverage License

**APPLICANT:** Mary Ellen Gebhardt “Gebhardt’s Chicken Dinners”

**PREMISES:** 124 N 260<sup>th</sup> St, Mulberry KS 66756

**(For consumption on the premises)**

Yeas: Commissioners Moody, Wood and Murphy

Nays:

Present but not voting:

Absent or not voting:

**The motion prevailed.**

**Item Two:** Mr. Emerson addressed the KAC dues for Crawford County which are up 3.75%. It was discussed that the dues are based on a formula which includes a \$500 base

## Board of Crawford County Commissioners

fee and the remaining dues are based on County population and assessed valuation. It was discussed that the county receives a lot of services from the association.

### Kansas Association of Counties

Invoice

300 SW 8th Ave, 3rd Floor  
Topeka, KS 66603-3912

Date	Invoice #
12/15/2016	12330

#### Bill To:

Crawford County Government  
% Board of County Commissioners  
P.O. Box 68  
Girard, KS 66743

Account #	Description	Amount
3100-100	2017 KAC Membership Dues ( See enclosed information sheet.)	7,563.32
Thank you for your prompt payment!		<b>Total</b>
		<b>Balance Due      \$7,563.32</b>

**On motion (16-471)** of Commissioner Wood and the second of Commissioner Moody to approve the payment of the Kansas Association of Counties membership for 2017 in the amount of \$7,563.32.

Yeas: Commissioners Moody, Wood and Murphy

Nays:



## Board of Crawford County Commissioners

Present but not voting:

Absent or not voting:

**The motion prevailed.**

**Item Three:** Mr. Emerson regarding the January 19, 2017 SEK INC. Banquet which will be held at Crestwood Country Club in Pittsburg. Mr. Emerson felt that the county should RSVP for anyone that would like to attend. Mr. Wood, Mr. Emerson, Mr. Murphy and Mr. Pyle indicated that they would like to attend the banquet. There was a discussion of the SEK, Inc. dues for 2017 of \$1,000. The Commissioners stated that they would like to have Steve Kossman of SEK, Inc. come to a meeting and explain the dues. Mr. Pyle will contact Mr. Kossman.

**Item Four:** Mr. Emerson addressed the proposed contract for Capitol Strategies to continue as the county lobbyist for 2017. Mr. Emerson had discussed this with Bill Brady and he indicated that if the county still wants their services, the price would be the same as 2016. Commissioner Moody and Mr. Emerson stated they have been very happy with their services. The Commissioners would like to visit with him before the session starts. Mr. Emerson added that the 25th of January is local Government Day which is hosted by KAC and the League of Kansas Municipalities. The program starts at 4:00 PM. Mr. Emerson stated January 25 is also the day that the Cherokee County Casino Lawsuit is on the Supreme Docket at 9:00 AM.

# Board of Crawford County Commissioners

## CONTRACT

This Contract is entered into between Capitol Strategies, LLC, and Crawford County, and is as follows:

Capitol Strategies agrees to provide monitoring and reporting representation to Crawford County through the 2017 Legislative Session, specifically to:

- 1) Monitor and report on legislative committee meetings involving issues of interest to Crawford County.
- 2) Monitor and report on other public meetings involving state government issues of interest to Crawford County. Meetings outside of Shawnee County will be approved on a case by case basis.
- 3) Work as directed by Crawford County to assist other entities and institutions within Crawford County with monitoring and reporting activities.
- 4) Provide advice and counsel as directed on state government issues of interest to Crawford County.
- 5) Assist as directed in representing the County at any Crawford County events during the legislative session such as "County Official Day" and "Crawford County/City of Pittsburg Day at the Capitol".
- 6) Assist and/or coordinate meetings requested by Commissioner and key county staff with various state personnel.
- 7) File all reports with the Kansas Ethics Commission regarding our lobbying activities.

Capitol Strategies agrees that at all times they will be independent contractors and will be responsible for payment of all taxes on monies received.

Crawford County agrees to pay Capitol Strategies \$10,000 for the 2017 session, to be made in two payments. The first payment is due 10 days following the date this contract is signed. The final payment is due by March 15, 2017. In addition, expenses will be billed for out-of-pocket charges such as lobbyist registration fees, travel outside of Shawnee County, conference calls, postage and copying for mass mailings. Those expenses will not exceed \$500.00 during the period of this contract without the express permission of Crawford County.

This agreement is entered into on this \_\_\_\_\_ of December, 2016.

\_\_\_\_\_  
CAPITOL STRATEGIES, LLC

\_\_\_\_\_  
CRAWFORD COUNTY

**On motion (16-472)** of Commissioner Wood and the second of Commissioner Moody to approve the Contract between Capitol Strategies and Crawford County for Lobbying Services for 2017 and Authorize the Chairman to sign.

Yeas: Commissioners Moody, Wood and Murphy

Nays:


Present but not voting:

Absent or not voting:

# Board of Crawford County Commissioners

The motion prevailed.

Item Five: Mr. Wood stated that he spoke with the salesman about the ditching machine.

 <b>JOHN DEERE</b>		Customer Purchase Order for John Deere Construction and Forestry Products - USA		PO# 04307020 PO Revision# Original
---	--	--	--	---------------------------------------

<b>PURCHASER NAME AND ADDRESS (First Signer)</b>				<b>DEALER NAME AND ADDRESS</b>			
NAME(First, Middle, Last) CRAWFORD COUNTY HIGHWAY DEPT				DEALER NAME Murphy Tractor & Equipment			
STREET or RR 111 E. FOREST AVE. (2ND FLOOR COURTHOUSE)				Dealer Account No.: 177713			
CITY GIRARD				STREET or RR 5255 N Deere Road			
STATE KS	ZIP CODE 66743	COUNTY Crawford		CITY Park City	STATE KS	ZIP CODE 672193308	Phone Number 316-942-1457
PHONE NUMBER 620-724-8725	EMAIL ADDRESS			Date Of Order: Dec 12, 2016			
PURCHASER NAME AND ADDRESS (Second Signer)				Dealer Order No.:			
NAME(First, Middle, Last)				TYPE OF SALE: <input checked="" type="checkbox"/> CASH <input type="checkbox"/> LEASE <input type="checkbox"/> TIME SALE <input type="checkbox"/> RPO			
STREET or RR				PURCHASER TYPE: 4 Use County			
CITY				MARKET USE CODE: 42 Non-Residential			
STATE	ZIP CODE	COUNTY		Add Purchaser to Mailing List (Check One or More) <input type="checkbox"/> Construction <input type="checkbox"/> Utility <input type="checkbox"/> Forestry <input type="checkbox"/> Government			
PHONE NUMBER	EMAIL ADDRESS			PURCHASER IS: <input checked="" type="checkbox"/> Business <input type="checkbox"/> Individual			
				Purchaser Acct.: <input type="checkbox"/> SOCIAL SECURITY <input type="checkbox"/> IRS TAX ID NO <input type="checkbox"/> EIN			
				NO.:			

EXTENDED WARRANTY IS: <input type="checkbox"/> Accept <input checked="" type="checkbox"/> Decline		LOCATION OF FIRST WORKING USE: Use State/Province		COUNTY CODE
(Initials)		Use County CRAWFORD		KS 37
Ultimate Uptime Package Purchase: <input type="checkbox"/> Yes <input checked="" type="checkbox"/> No		(Initials)		

QTY	WZ	D	OS	TH	CH	EQUIPMENT (Model, Size, Description)	Hours of Use	PIN or Serial Number	Delivered Cash Price
1	X					DIAMOND Ditcher	0		
- DECLINED :John Deere Preventative Maintenance :									
- DECLINED :John Deere Extended Warranty :									
(1) TOTAL CASH PRICE								\$ 9,000 00	

QTY	TRADE-IN (Model, Size, Description)	Hours of Use	PIN or Serial Number	AMOUNT
COMMENTS:				
			2) TOTAL TRADE-IN ALLOWANCE	\$ 0 00
			3) TOTAL TRADE-IN PAY-OFF	\$ 0 00
			4) BALANCE	\$ 9,000 00
			5) SUBTOTAL	\$ 9,000 00
			6) RENTAL APPLIED	\$ 0 00
			7) CASH WITH ORDER	\$ 0 00
			8) BALANCE DUE	\$ 9,000 00

**ACKNOWLEDGMENTS:** Purchaser offers to sell, transfer, and convey the item(s) listed as "Trade In" to the Dealer at or prior to the time of delivery of the above product(s), as a "trade-in" to be applied against the cash price. Purchaser represents that each "trade-in" item shall be free and clear of all security interests, liens, and encumbrances at the time of transfer to the Dealer except to the extent shown below. The price to be allowed for each "trade-in" item is listed on this document. The Purchaser promises to pay the Balance Due (line 8) shown hereon in cash, or to execute a Time Sale Agreement (Retail Installment Contract), or a Loan Agreement for the purchase price of the Product(s), plus additional charges shown thereon, or to execute a Lease Agreement, on or before delivery of the equipment ordered herein. Despite delivery of the Product(s) to the Purchaser, title shall remain with the Seller until one of the foregoing is accomplished. The Purchaser and the Dealer agree that this Purchase Order is not a security agreement and that delivery of the Product(s) to the Purchaser pursuant to this Purchase Order will not constitute possession of the Product(s) by the Purchaser, as a debtor, for the purposes of the purchase money security provisions in any statutes relating to personal property security or its equivalent. Purchaser understands that its rights in connection with this purchase are limited as set forth in this Purchase Order.

**DISCLOSURE OF REGULATION APPLICABILITY:** When operated in California, any off-road diesel vehicle may be subject to the California Air Resources Board In-Use Off-Road Diesel Vehicle Regulation. It therefore could be subject to retrofit or accelerated turnover requirements to reduce emissions of air pollutants. More information is available on the California Air Resources Board website at <http://www.arb.ca.gov/msprogfordiesel/ordiesel.htm>.

# Board of Crawford County Commissioners

**JOHN DEERE** Customer Purchase Order for John Deere Construction and Forestry Products - USA PO Revision# Original

Quote ID: 14465608 Customer Name: CRAWFORD COUNTY HIGHWAY DEPT

**IMPORTANT WARRANTY NOTICE:** The Standard Warranty for new John Deere construction and forestry products is set forth in a separate document provided by the dealer. Please read the Standard Warranty carefully before signing. No express warranty is made unless specified in the Warranty Statement. PURCHASER'S RIGHTS AND REMEDIES PERTAINING TO THIS PURCHASE ARE LIMITED AS INDICATED IN THE STANDARD WARRANTY AND PURCHASE ORDER. WHERE PERMITTED BY LAW, NO IMPLIED WARRANTY OF MERCHANTABILITY, CONDITIONS OR FITNESS IS MADE.

The undersigned purchaser(s) (the "Purchaser") hereby orders the product(s) (the "Product") described above from the Dealer. The Dealer shall not be liable for failure to provide the Product or for any delay in delivery if such failure or delay is due to the Dealer's inability to obtain such Product from the manufacturer or supplier or other cause beyond the Dealer's control. The cash price shown above is subject to the Dealer receiving the Product from the manufacturer or supplier prior to any change in price by the manufacturer or supplier and is also subject to any new or increased taxes being imposed upon the sale of the Product after the date of this Purchase Order.

**TERMS & CONDITIONS VERIFICATION STATEMENT:** Use of John Deere Data Services, if applicable, and all rights and obligations of John Deere and the Purchaser (or "Customer" as identified in the applicable agreement), are governed by the terms and conditions outlined in the Warranty Statement and the applicable John Deere Construction & Forestry Company Subscriptions & Data Services Dealer Agreement and/or Customer Data Services agreements available at [www.JohnDeere.com/Agreements](http://www.JohnDeere.com/Agreements). Purchaser agrees to be bound by these terms and conditions if Purchaser activates or otherwise uses any of the Data Services. If Purchaser does not agree to these terms and conditions, Purchaser must not activate or otherwise use the Data Services.

Purchaser's signature below acknowledges the Purchaser has received a copy of the Standard Warranty, Version \_\_\_\_\_ (initials) and understands its terms and conditions.

Purchaser (First Signer)	CRAWFORD COUNTY HIGHWAY DEPT	Signature	<i>Tom 19</i>	Date	12-20-16
Purchaser (Second Signer)		Signature		Date	
Dealer Representative	Murphy Tractor & Equipment	Signature		Date	
Salesperson	CLINESMITH, TRAVIS	Signature	<i>Travis Clinesmith</i>	Date	12-12-16

<b>DELIVERY ACKNOWLEDGEMENT</b>	Delivered with Operator's Manual On: _____	Purchaser Signature	_____
---------------------------------	--	---------------------	-------

**On motion (16-473)** of Commissioner Wood and the second of Commissioner Moody to approve the Purchase of a Ditching Machine out of the Equipment Reserve Fund.

Yeas: Commissioners Moody, Wood and Murphy

Nays:

Present but not voting:

Absent or not voting:

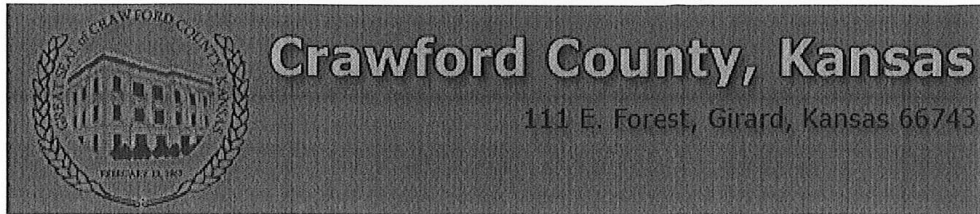
**The motion prevailed.**

**Item Six:** Mr. Wood regarding a complaint last week about tardiness and he wants the other Commissioners to think about a time clock after the first of the year.

## UNDER THE HEADING OLD BUSINESS

**Item One:** Mr. Murphy handed out the minutes from the last Economic Development Committee meeting in Arma. It was discussed that the committee was going to help the City of Arma in contacting Dollar General Stores in hopes that they would expand the grocery portion of their store. Mr. Murphy stated that they will meet again in January.

# Board of Crawford County Commissioners



## Crawford County Economic Development Committee

### Meeting Minutes

November 28, 2016

#### Call to Order

The meeting was called to order at Arma City Hall by Commissioner Jeff Murphy.

#### Committee Members Present

Kenny Stotts, Paul Jones, Jason Han, Julie Smith, Dick Horton.

#### Discussion of Arma City developments

Several of the members of the Arma city council, the Arma city clerk, and several community members were present. The group discussed Arma's development of a land bank to obtain derelict properties and clean up old structures. This has been a positive development. The group discussed the possibility of using county labor and equipment in this effort.

The group discussed the desire of the city to have a grocery store. The city has approached Dollar General about expanding their store to include groceries with no success. Commissioner Murphy offered to engage Brad Stroud, Crawford County Live Well director, and Blake Benson, Pittsburg Area Chamber of Commerce chairman, to assist with contacting Dollar General.

The group discussed the City's desire to develop the "West Acres" subdivision area into housing. Commissioner Murphy indicated it may be possible to use County labor and equipment for site and road work if the other commissioners are in agreement.

The group discussed the need for county-wide meetings focused on economic development to allow Cities and the County to share ideas and resources.

#### Opportunity Space website

Mr. Murphy briefed the group on the City of Pittsburg's "Opportunity Space Website". This website shows properties available for development in Pittsburg. It can be viewed here: <http://www.pittks.org/index.aspx?NID=910> The County is proceeding with an effort which could make the website available county-wide.

## EXECUTIVE SESSION:

**Item One:** Commissioner Jeff Murphy requested an executive session for 15 minutes to discuss matters involving Non-Elected Personnel.

**On motion (16-474)** of Commissioner Moody and the second of Commissioner Murphy to recess this open session and go into a closed executive session for a period of not more than 15 minutes to discuss matters involving Non-Elected Personnel and to include the Board of County Commissioners and County Counselor Jim Emerson.

Yeas: Commissioners Moody, Murphy and Wood

Nays:

Present but not voting:

Absent or not voting:

**The motion prevailed.**

## **Board of Crawford County Commissioners**

The Commissioners went into Executive Session at 11:11 AM and reconvened the Open Session at 11:15 AM with no action taken except to go back into open session.

**Item Two:** Commissioner Tom Moody requested an executive session for a period of not more than 10 minutes to discuss matters involving Non-Elected Personnel.

**On motion (16-475)** of Commissioner Moody and the second of Commissioner Wood to recess this open session and go into a closed executive session for a period of not more than 10 minutes to discuss matters involving Non-Elected Personnel and to include the Board of County Commissioners, County Counselor Jim Emerson and County Clerk Don Pyle

Yeas: Commissioners Moody, Murphy and Wood

Nays:

Present but not voting:

Absent or not voting:

**The motion prevailed.**

The Commissioners went into Executive Session at 11:17 AM and reconvened the Open Session at 11:24 AM with no action taken except to go back into open session.

### **UNDER THE HEADING FUTURE BUSINESS AND ANNOUNCEMENTS**

#### **FUTURE BUSINESS:**

**Item One: December 27, 2016** – Public Hearing on 2016 Crawford County Amended Budget.

**Item Two: December 27, 2016** – Public Hearing on 2016 Crawford County Fire District Number One Amended Budget.

#### **ANNOUNCEMENTS:**

**Item One: Friday, December 23, 2016** – The Courthouse will be close at noon in observance of the Christmas Holiday.

**Item Two: Monday, December 26, 2016** – The Courthouse will be closed in observance of the Christmas Holiday.

**Item Three: Monday, January 2, 2017** – The Courthouse will be closed in observance of the New Year's Holiday.

**Item Four: Friday, December 23, 2016** – The Meeting of the Board of Commissioners is cancelled and the Commissioners will attend a Christmas Party at the County Barn.

### **UNDER THE HEADING MOTION TO ADJOURN**

#### **MOTION TO ADJOURN**

**Item One:** Adjournment

## Board of Crawford County Commissioners

**On the motion** of Commissioner Wood and the second of Commissioner Moody to adjourn the [December 20, 2016](#) meeting of the Board of Crawford County Commissioners at 11:26 AM and to reconvene at the next regularly scheduled time with open doors.

Yeas: Commissioners Moody, Murphy and Wood

Nays:

Present but not voting:

Absent or not voting:

**The motion prevailed.**

**In Testimony whereof, I have hereunto set my hand and caused to be affixed my official seal and submitted these minutes for the approval of the Board of Crawford County Commissioners.**

---

**Don Pyle**  
County Clerk

◇

**This submission completed at the Crawford County Courthouse in Girard.**

[Taken BKW 12/20/16 11:26 AM/amended DPP 12/22/16 2:00 PM](#)