

Board of Crawford County Commissioners

Commissioners' Journal

2016, [SEVENTY-SECOND](#) MEETING

CRAWFORD COUNTY COURTHOUSE, COMMISSIONERS' BOARD ROOM
Girard, KS [Tuesday, September 27, 2016, 10:00 AM](#)

The Crawford County Board of Commissioners met pursuant to Kansas Statutes

Annotated Chapter 19, Article 2, Section 18 in due and regular session with open doors.

Commissioner Tom Moody served as the presiding officer.

Commissioners Carl Wood and Jeff Murphy were in attendance.

County Clerk Don Pyle and County Counselor Jim Emerson were seated with the Board.

Chairman Moody led the pledge of allegiance.

UNDER THE HEADING BUSINESS FROM A PREVIOUS MEETING

CONSENT AGENDA

On motion (16-346) of Commissioner Wood and the second of Commissioner Moody that the consent agenda be approved including:

1. Approval of the [September 23, 2016](#) minutes of the Board of County Commissioners.

Yeas: Commissioners Moody, Murphy and Wood

Nays:

Present but not voting:

Absent or not voting:

The motion prevailed and the consent agenda was approved.

SIGNING OF MOTIONS

The County Clerk presented the following motions for Commissioners' signatures:

Motion 16	340	That the consent agenda be approved including: Approval of the September 16, 2016 minutes of the Board of County Commissioners
Motion 16	341	To make it known that the board hereby issues a license to "sell at retail", cereal malt beverages from the place of business as shown in the application APPLICANT: Janet O'Brien "Class of '79" PREMISES: Marvin Green Building, Crawford County Fairgrounds, 249 E 47 Hwy, Girard, KS DATE: Beginning 6:00 PM October 1, 2016 ending 11:30 PM October 1, 2016. (For consumption on the premises)
Motion 16	342	To approve the lease purchase agreement between Girard National Bank and the Board of County Commissioners, Crawford County, Kansas for 3 vehicles and equipment for the Sheriff's Department for \$80,087.00 at 1.74% for 3 years and authorize the Chairman to sign

Board of Crawford County Commissioners

Motion 16	343	To adopt Resolution #2016-025, a Resolution Appointing an Emergency Management Director, Jason VanBecelaere and an Assistant Emergency Management Director Eldon Bedene for Crawford County, Kansas
Motion 16	344	To recess this open session and go into a closed executive session for a period of not more than 15 minutes to discuss matters that would be deemed privileged in the attorney-client relationship and to include the Board of County Commissioners and County Counselor Jim Emerson
Motion 16	345	To recess this open session and go into a closed executive session for a period of not more than 5 minutes to discuss personnel matters involving Non-Elected Personnel and to include the Board of County Commissioners and County Counselor Jim Emerson

UNDER THE HEADING NEW BUSINESS

PUBLIC HEARINGS AND OPENING OF ANNOUNCED BIDS

MESSAGES FROM THE COUNTY LOCAL BOARD OF HEALTH

MESSAGES FROM THE PUBLIC

MESSAGES FROM APPOINTED OFFICIALS

Item One: Mr. John Macary, Interim County Appraiser, addressing Sales Ratio Study. Mr. Macary handed out the 2015 Final Real Estate Appraisal/Sales Ratio Study. He explained the study to the Commissioners and answered any questions the Commissioners had. Mr. Macary also handed out a letter from the Kansas Department of Revenue stating that the statistical and procedural compliance review to determine substantial compliance with the county appraiser's office pursuant to K.S.A. and Directive #14-046 has been completed and that our county has met the criteria and is determined to be in substantial compliance.

Board of Crawford County Commissioners

Division Of Property Valuation
Docking State Office Building
915 SW Harrison St., Room 400N
Topeka, KS 66612-1588



phone: 785-296-2365
fax: 785-296-2320
www.ksrevenue.org

Nick Jordan, Secretary
David N. Harper, Director

Sam Brownback, Governor

September 12, 2016

Dear County Commissioners:

The statistical and procedural compliance review to determine substantial compliance within the county appraiser's office pursuant to K.S.A. 79-1445 and Directive #14-046 has been completed. A minimum of 75 points is required to successfully achieve substantial compliance. Your county has met the criteria and is determined to be in substantial compliance.

The efforts of your county appraiser and appraisal staff to successfully complete the appraisal cycle in a satisfactory manner are to be commended. Accurately appraising properties is without doubt a difficult task and the support of the county commissioners is crucial to the success of the appraisal effort. Our mutual goal in this process is fair and equal treatment for all taxpayers. I sincerely appreciate your support as we continue our efforts to achieve and maintain the objective of taxpayer fairness.

If you have any questions concerning the compliance review, please contact Anna Porter at (785) 296-2365 or anna.porter@ks.gov. If I can be of any assistance to you, please do not hesitate to ask.

Respectfully,

A handwritten signature in black ink that reads "David A Harper". The signature is written in a cursive style.

David N. Harper, Director
Property Valuation Division

DNH/plh

cc: County Appraiser

Board of Crawford County Commissioners

2015 Final Real Estate Appraisal/Sales Ratio Study

Confidence intervals have been calculated only on the residential and commercial subclass

019 : CRAWFORD COUNTY											
PROPERTY CLASS	Median Ratio	Confidence Interval		COD	Confidence Interval		PRD	Confidence Interval		Valid Sales	Trim Sales
Residential	98.5	95.2	to 100.0	13.2	11.3	to 15.0	1.03	1.01	to 1.05	209	35
Comm./Ind.	97.4	77.5	to 123.2	26.0	18.9	to 34.7	0.97	0.88	to 1.08	27	3
Vacant Lot	80.2	N/A		30.8	N/A		1.05	N/A		20	1
Farm & Home	68.4	N/A		28.8	N/A		1.01	N/A		16	0
Ag. Land Only	5.6	N/A		59.1	N/A		0.80	N/A		27	1
Ag. (Impr.+ Land)	5.6	N/A		54.5	N/A		0.79	N/A		31	2
Other/Ex/Ut/NP/M	100.8	N/A		109.2	N/A		1.79	N/A		4	0
Total w/Ag.&F&H	93.8	N/A		18.9	N/A		1.02	N/A		307	60
Total Market	97.4	N/A		15.2	N/A		1.01	N/A		260	41

S - Supplemental Sales Added

T - Trend

Statistical Performance Standards: Median Ratio = 90.0 to 110.0

COD = 20.0 or less

PRD = .98 to 1.03

(Compliance determined by confidence intervals)

MESSAGES FROM OTHER GOVERNMENTAL ENTITIES

Item One: Mr. Chris Weiner, Girard city administrator, addressed the Commissioners in reference to the Streetscape Project. Mr. Weiner stated that he received Crawford County's estimated share of the sidewalk project from PEC Engineering for the interior sidewalks around the Courthouse. He handed out an Estimate of Probable Cost, Crawford County Participating Cost from PEC in the total amount of \$25,844.44. He reviewed the document with the Commissioners. Mr. Weiner stated that he is requesting that amount and stated that if the actual costs would come in lower or higher, it would be addressed at that time. Mr. Weiner discussed the trees on the courthouse lawn and what PEC recommended on the trees. Mr. Murphy was answered that the estimate does include the 2 entrances to the parking lot. Mr. Wood was answered that the interior sidewalks around the courthouse are the County's property and it is the County's responsibility to maintain them. Mr. Pyle discussed the trees on the courthouse lawn and handed out a memo from Mr. Tim McDonnell from the Kansas Forest Service with Mr. McDonnell's recommendations on the trees. Mr. Murphy stated that he believes that the trees that Mr. McDonnell suggested on removing be removed. Mr. Weiner stated that the City of Girard has already paid KDOT Crawford County's share of the project and the payment received from the County will replenish the City's funds. Mr. Weiner updated the Commissioners on the City's paving project and the Commissioners discussed the County assisting in the project.

Board of Crawford County Commissioners

ESTIMATE OF PROBABLE COST CRAWFORD COUNTY PARTICIPATING COST

Downtown Streetscape
KDOT Project No. 19 TE-0419-01

City of Girard, KS
PEC Project No. 335-14E72-000-7334

Professional Engineering Consultants, P.A.
September 26, 2015
BMC

ITEM (A)	DESCRIPTION (B)	UNIT (C)	NO. OF UNITS TOTAL PROJECT (D)	NO. OF UNITS COUNTY PROJECT (E)	UNIT BID PRICE (F)	TOTAL COST COUNTY PROJECT (= E x F)
BASE BID						
1	Contractor Construction Staking	Lump Sum	Lump Sum	-	-	-
2	Field Office	Each	1	-	-	-
3	Mobilization	Lump Sum	Lump Sum	-	-	-
4	Mobilization (DBE)	Lump Sum	Lump Sum	-	-	-
5	Removal of Existing Structures	Lump Sum	Lump Sum	-	-	-
6	Foundation Stabilization (Set Price)	Cu. Yd.	1	-	-	-
7	Clearing and Grubbing	Lump Sum	Lump Sum	-	-	-
8	Common Excavation (URB)	Cu. Yd.	911	212	\$ 36.10	\$ 7,653.20
9	Rock Excavation	Cu. Yd.	1,492	190	\$ 25.00	\$ 4,750.00
10	Water (Grading)(Set Price)	Mgal	1	-	-	-
11	Temporary Surfacing Material (Aggregate)(Set Price)	Cu. Yd.	1	-	-	-
12	Inlet (Curb)(Special)	Each	13	-	-	-
13	Inlet (Area)(Special)	Each	5	-	-	-
14	Grate	Each	29	-	-	-
15	End Section (1.5 Sq. Ft.)(RCHE)	Each	1	-	-	-
16	Storm Sewer (15")(PEP)	Ln. Ft.	600	-	-	-
17	Storm Sewer (18")(PEP)	Ln. Ft.	45	-	-	-
18	Storm Sewer (1.5 Sq. Ft.)(RCPHE)	Ln. Ft.	148	-	-	-
19	Flume Inlet (Concrete)	Each	3	-	-	-
20	Sidewalk Construction (4")(AE)	Sq. Yd.	4,292	912	\$ 49.75	\$ 45,372.00
21	Sidewalk Ramp	Sq. Yd.	231	57	\$ 125.00	\$ 7,125.00
22	Curb and Gutter, Combined (AE)	Ln. Ft.	4,805	1255	\$ 24.00	\$ 30,120.00
23	Concrete Pavement (6" Uniform)(AE)	Sq. Yd.	58	38	\$ 51.00	\$ 1,938.00
24	Concrete Pavement (8" Uniform)(AE)	Sq. Yd.	1,969	278	\$ 53.00	\$ 14,787.00
25	Granular Base (6")	Sq. Yd.	3,834	767	\$ 11.00	\$ 8,437.00
26	Water (Granular Base)(Set Price)	Mgal	1	-	-	-
27	Bench	Each	8	-	-	-
28	Waste Receptacle	Each	8	-	-	-
29	Planter Unit	Each	8	-	-	-
30	Water System	Lump Sum	Lump Sum	-	-	-
31	Water System (Irrigation)	Lump Sum	Lump Sum	-	-	-
32	Temporary Seeding	Lump Sum	Lump Sum	-	-	-
33	Temporary Berm (Set Price)	Ln. Ft.	1	-	-	-
34	Filter Sock (6")	Ln. Ft.	102	-	-	-
35	Sediment Removal (Set Price)	Cu. Yd.	1	-	-	-
36	SWPPP Design	Lump Sum	Lump Sum	-	-	-
37	SWPPP Inspection	Each	20	-	-	-
38	Water Pollution Control Manager	Each	1	-	-	-
39	Water Erosion Control (Set Price)	Mgal	1	-	-	-
40	Sod (Tall Turf Type Fescue)(Strip)	Sq. Yd.	731	534	\$ 10.00	\$ 5,340.00
41	Fertilizer (13-13-13)	Lbs.	63	-	-	-
42	Sign (Flat Sheet)(High Performance)	Sq. Ft.	97	15	\$ 30.00	\$ 450.00
43	Sign Post (2 Lb/Ft "U" Steel)	Ln. Ft.	180	150	\$ 15.00	\$ 2,250.00
44	Pavement Marking (Multi-Component)(Yellow)(4")	Ln. Ft.	2,273	-	-	-
45	Pavement Marking (Multi-Component)(Yellow)(6")	Ln. Ft.	1,820	-	-	-
46	Pavement Marking (Multi-Component)(White)(6")	Ln. Ft.	3,955	-	-	-
47	Pavement Marking (Multi-Component)(White)(24")	Ln. Ft.	737	-	-	-
48	Pavement Marking Symbol (Paint)(White)(Handicap)	Each	18	-	-	-
49	Pavement Marking Removal	Ln. Ft.	3,266	-	-	-
50	Electric Lighting System	Lump Sum	Lump Sum	-	-	-
51	Topsoil	Cu. Yd.	802	-	-	-
52	Furnishing and Planting Plant Materials	Lump Sum	Lump Sum	-	-	-

SUB-TOTAL CONSTRUCTION COST - COUNTY PROJECT = \$ 128,222.20

KDOT SHARE (80%) = \$ 102,577.76

CRAWFORD COUNTY SHARE (20%) = \$ 25,644.44

Board of Crawford County Commissioners

Christopher Weiner

From: Brian Coomes <Brian.Coomes@pec1.com>
Sent: Tuesday, September 27, 2016 8:06 AM
To: Christopher Weiner
Cc: Bruce Remsberg
Subject: RE: Streetscape

Chris,

I apologize that I'm just now circling back around to this e-mail. I'll try and address all of these items below:

- Estimate of County Expenses – this was provided via separate e-mail yesterday.
- The project does include removal and replacement of their two driveways. We have coordinated dimensions and configuration of these items with Tom Ragonese and confirmed with Bob Gorentz.
- With regards to the trees, the contractor is only required to remove the roots necessary to facilitate installation of the new sidewalks (essentially, only removing those within the top 4'). Since these are mature trees, and there is a sidewalk there already, it's likely that this removal required will be minimal. Bruce drove over and took a look at the trees, and in his experience, none of the trees are close enough to the sidewalk to make a substantial impact, especially when you consider that these are mostly mature trees. He doesn't believe it will be a problem. If that is not satisfactory, a summary of the county's options is below:
 - o Proceed as discussed above, with the potential risk to replace a minimal amount of sidewalk panels 5-10 years down the road (We believe this is very low risk).
 - o Instruct the contractor to utilize a 'root saw', and trench behind the new sidewalk, essentially cutting all roots from the source of the tree. There would be significant risk that the trees would not survive this operation. This would need to be executed as a change order.
 - o Remove the trees ahead of the project. This would need to be executed as a change order.
 - o Hire a certified arborist to get their opinion. PEC does not offer this service. We could assist in searching for someone, if necessary.
- Other items to keep on the radar:
 - o Bob Yaeger and Bob Gorentz had discussed tree removal during the project. There was concern with placing this responsibility on the Contractor, as there was not a way to ensure that they Contractor would cut the trees in the aesthetic manner that the County desired. So, it was agreed that the City would perform Tree Removal, as required, to facilitate installation of the new light poles. This was to be coordinated by the Contractor through Bob Yaeger. You will want to designate a person to perform these operations in Bob's absence, or consider hiring a tree removal person under the City's control.
 - o Similar to the Geometric Improvement, your electric crews will be required to connect the new primary service for the lighting system to your existing electric grid. I believe your new electric superintendent will need to be brought up to speed on this.
 - o Your electric crews will be required to 'cut in' the new service connection to the County's transformer. This will need to be scheduled with the County (Bob Gorentz) to ensure that this work is performed in a manner that does not disrupt their power service. I believe at one of our previous review meetings, the possibility of performing this on a weekend was discussed, but would be finalized as the project progresses.

Hope that helps. Let me know of any additional questions you may have.

Regards,
-Brian

Brian Coomes, PE
Municipal Transportation Division
620-235-0195 x6003 Direct 620-238-0282 Mobile
Brian.Coomes@pec1.com

Board of Crawford County Commissioners



Professional Engineering Consultants, P.A.
104 S Pine; Pittsburg, KS 66762
620-235-0195 www.pec1.com



From: Christopher Weiner [mailto:cityadmin@girardkansas.gov]
Sent: Tuesday, September 06, 2016 11:32 AM
To: Brian Coomes <Brian.Coomes@pec1.com>; 'Julie Smith' <girardchamber@ckt.net>
Subject: RE: Streetscape

No, I think that's pretty good. Julie, does that encompass what you were looking for? I can work with you to try and communicate the plans to the businesses.

Brian, I was at the County Commission meeting this morning and they had a few questions regarding the project for me to ask you. They have committed to pay for the interior portion of the sidewalk construction up to \$30,000. Could you please put together an estimate on the cost of removal and construction of the interior sidewalk and associated expenses? Also, they were wanting to make sure that the rebuilding of their accesses to their parking lot is included in the plan, I told them I thought it was but that I would check to be sure. They also asked me to see if you could provide a recommendation of the trees in the Courthouse lawn which are close to the sidewalk. They are concerned that the roots could tear up the new sidewalk. The other thing was that they wanted to be sure you had talked with their maintenance guy, Robert Grintz (sp?), about the project and what the County would need to do (they thought you had already done this but wanted to check).

Thanks Brian!

Chris

Christopher Weiner
City Administrator
Girard, Kansas
Phone: (620) 724-8918
Mobile: (620) 238-2655
Fax: (620) 724-8060



On motion (16-347) of Commissioner Murphy and the second of Commissioner Moody to pay the City of Girard \$25,844.44 for Crawford County's share of the Streetscape project for the interior sidewalks around the Courthouse.

Yeas: Commissioners Moody, Murphy and Wood

Nays:

Present but not voting:

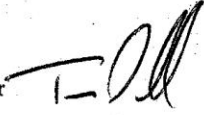
Absent or not voting:

The motion prevailed.

Board of Crawford County Commissioners



Kansas Forest Service
1901 E. 95th St. S.
Haysville, KS 67060-8351
316-788-0492, ext. 202
Fax: 316-788-3844
<http://www.kansasforests.org>

DATE: September 21, 2016
TO: Donald Pyle, Crawford County Clerk
FROM: Tim McDonnell, KS Forest Service, Comm. Forestry Coordinator 
RE: Trees at the Courthouse

I inspected the trees in question with your maintenance person on September 20th. I am in complete agreement with Jacob Weber, Co. Hort. Agent; that the four trees in question require removal.

- Two pin oaks on the east side are in a decline phase and would be easier and safer to remove now. They will not recover from the decline phase.
- One sugar maple on the NE corner of the courthouse is half dead and has a split in the trunk.
- One elm by the west parking lot is too proximate to the asphalt parking lot and is in decline and showing top dieback. Nearby construction will only compound this issue.

I would also encourage for you to prune out the dead limbs mainly in the pin oaks and consider planting some young trees as part of your project. Most of your existing trees are mature in age.

Some suggestions for replanting would be:

- Flowering crabapples for spring bloom.
- Redbuds for spring bloom.
- Goldenraintree for summer bloom.
- Large shade trees: Exclamation Londonplanetree, baldcypress, American, silver or littleleaf linden, zelkova, lacebark elm and some of the new American and hybrid elms.



MESSAGES FROM ELECTED OFFICIALS PROCLAMATION AND ORDERS OF THE BOARD NEW BUSINESS

Item One: Mr. Pyle presented amended 2017 budget for 11th Judicial District Court. Mr. Pyle explained the reason for amending the budget.

Board of Crawford County Commissioners

Submit to County Commission by July 15 and forward a copy of the proposed budget to the Office of Judicial Administration. Approved budgets are due in the Office of Judicial Administration by August 25.

ANNUAL BUDGET

Form No. JA 100
Rev. 4/16

K.S.A. 20-349

All Funds Summary

11th Judicial District

Crawford County, Kansas

Fund	Actual Expenditures Previous Year 2015	Estimated Expenditures Current Year 2016	Proposed Expenditures Budget Year 2017
General	\$381,955.53	\$422,735.00	\$442,500.00
Court Trustee			\$432,500.00
Retirement			
Social Security			
Workmen's Compensation			
Employee Benefit			
Other			\$432,500.00
FUND TOTALS	\$381,955.53	\$422,735.00	\$442,500.00
<p>COMMENTS:</p> <p>Submitted: <u><i>[Signature]</i></u> Chief Judge</p> <p>Enclosures: Circle All Which Apply</p> <p>General Fund Account Special Revenue Account Personnel Schedule Court Trustee Operation Fund Court Trustee Personnel Schedule Other Funds</p> <p>Approved: <input type="checkbox"/> As Submitted (Circle One) <input checked="" type="checkbox"/> As Amended</p> <p>Presiding Officer, County Commission</p> <p>Date: <u>Jan 10</u></p>			
Although courts are not revenue-producing agencies, fees and other revenues which have accrued or will accrue to the County General Fund are as follows:	Actual Previous Year 2015	Estimated Current Year 2016	Proposed Budget Year 2017
	State: \$410,928.82	State: \$400,000.00	State: \$400,000.00
	County: \$50,982.64	County: \$50,000.00	County: \$50,000.00

Board of Crawford County Commissioners

11th Judicial District

Annual Budget
K.S.A. 20-349
General Fund Account

Form No. JA 101
Rev. 4/16
Crawford County, Kansas

Expenditure Detail	Actual Previous Year - 2015	Estimated Current Year - 2016	Proposed - Budget Year - 2017
Personnel Services			
Salaries			
Fringe Benefits			
Health Insurance			
Contractual Services			
Indigent Services			
Legal Defense	\$153,067.85	\$158,750.00	\$162,500.00
Witness Fees and Travel			
Transcripts	\$13,300.64	\$14,000.00	\$15,000.00
Medical/Psychiatric Exam	\$1,931.62	\$3,000.00	\$3,000.00
Other (Publications)	\$1,503.58	\$1,500.00	\$1,500.00
Juvenile GAL			
Mentally Ill GAL			
Alcohol Treatment			
Drug Tests	\$867.50	\$1,500.00	\$1,500.00
Judges Pro Tem	\$500.00	\$1,000.00	\$1,000.00
Court Reporters			
Interpreters	\$1,238.17	\$2,500.00	\$2,500.00
Trial Costs			
Juror Fees and Travel	\$2,857.08	\$5,000.00	\$15,000.00
Juror Meals			
Other			
Travel	\$5,400.04	\$7,500.00	\$7,500.00
Education, Tuition and Training	\$1,609.24	\$2,500.00	\$2,500.00
Equipment Rental	\$4,139.44	\$3,500.00	\$3,500.00
Repair and Maintenance	\$13,873.72	\$13,000.00	\$13,000.00
Microfilming	\$6,246.69	\$3,050.00	\$3,500.00
Postage	\$17,671.05	\$16,500.00	\$16,500.00
Rent			
Telephone	\$37,382.88	\$39,000.00	\$40,000.00
Utilities	\$63,114.00	\$70,000.00	\$70,000.00
Computer Services	\$2,526.25	\$8,500.00	\$17,500.00
Fax Service			
District Expense			
Other (Professional Memberships & Subscriptions)	\$3,427.84	\$3,500.00	\$3,500.00
Commodities:			
Printing and Office Supplies	\$21,848.18	\$26,935.00	\$25,000.00
Recording Tapes			
Other (Books)		\$3,000.00	\$3,000.00
Capitol Outlay:			
Office Equipment	\$19,197.76	\$28,000.00	\$25,000.00
Recording Equipment			
Other (Janitorial & Maintenance)	\$10,252.00	\$10,500.00	\$10,000.00
Special Projects:			
TOTAL	\$381,955.53	\$422,735.00	\$431,500.00 \$442,500.00

On motion (16-348) of Commissioner Moody and the second of Commissioner Murphy to approve the amended 2017 11th Judicial District Court Budget and authorize the Chair to sign.

Yeas: Commissioners Moody, Murphy and Wood

Nays:

Present but not voting:

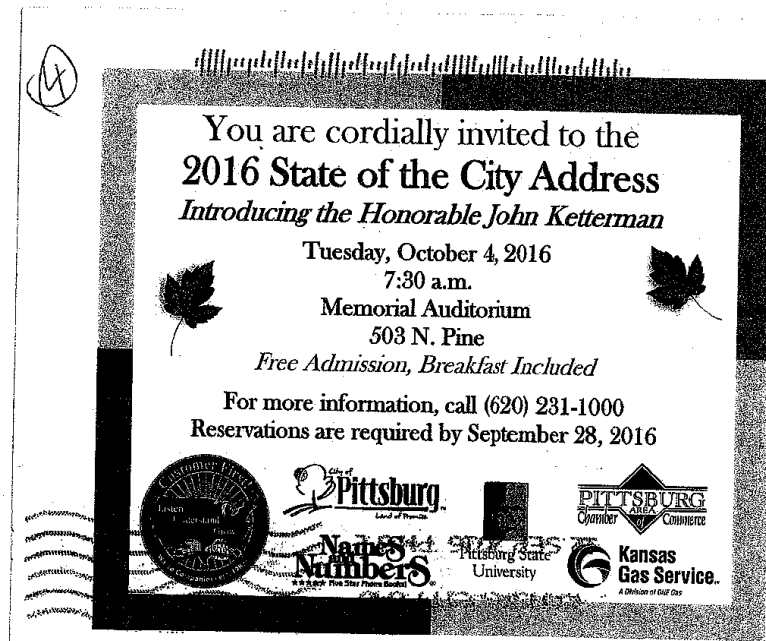
Absent or not voting:

Board of Crawford County Commissioners

The motion prevailed.

Item Two: Mr. Pyle stated that the Commissioners received a thank you from the Little League team from Frontenac thanking the Commissioners for their support and donation in helping their team travel to Indianapolis.

Item Three: Mr. Pyle stated that there will be a 2016 State of the City Address on Tuesday, October 4, 2016 at 7:30 AM at Memorial Auditorium, 503 N Pine, Pittsburg, Kansas. Mr. Pyle stated that the Honorable John Ketterman will be introduced and a reservation is requested. All three Commissioners stated that they will be in attendance and Mr. Pyle will make the reservations.



Item Four: Mr. Pyle stated that today is National Voter Registration Day. Mr. Pyle stated that he put out a press release urging voters to check their voter registration and to remind voters that they have until October 18, 2016 to register or make any changes to their current registration.

Item Five: Mr. Wood stated he received an email from General Manager of Kansas Crossing asking the Commissioner to attend a luncheon on Thursday, September 29, 2016 at 11:30 AM on the casino floor.

Item Six: Mr. Wood stated that he had questions on an invoice from the Gallagher Group. Mr. Wood wanted to know when the consulting fee was extended for another year. He stated the previous contract ended 9/1/2016. Mr. Murphy was answered that the County has been paying Gallagher Group a monthly fee. A discussion was held on the previous contract with Gallagher Group and whether a new contract has to be for a year or on a monthly basis. Mr. Pyle will contact Gallagher Group.

UNDER THE HEADING OLD BUSINESS

Board of Crawford County Commissioners

Item One: Mr. Pyle state that he and Mr. Emerson had conference call with Gallagher Group on dental insurance. He stated that the County can save money by going with Delta Dental. He stated that it can be a self-insured or fully insured policy. Mr. Pyle addressed the savings on self-insured verses fully insured and the difference between the two policies. Mr. Pyle stated that Delta Dental also locked in a maximum of a 6% increase for 2018 but the County is not obligated to take that policy next year. Mr. Emerson stated that in the past, the County has never went with a self-insured policy with Delta Dental

On motion (16-349) of Commissioner Moody and the second of Commissioner Murphy to sign with Delta Dental Insurance for 2017 and with the fully insured policy.

Yeas: Commissioners Moody, Murphy and Wood

Nays:

Present but not voting:

Absent or not voting:

The motion prevailed.

Item Two: Mr. Murphy addressed the dump truck specs. He spoke about the automatic transmission verses the standard transmission. He discussed other issues with the specs.

EXECUTIVE SESSION:

Item One: Commissioner Wood requested an executive session for a period of not more than 30 minutes to discuss matters involving Attorney-Client privilege and to include the Board of County Commissioners and County Counselor Jim Emerson.

On motion (16-350) of Commissioner Moody and the second of Commissioner Wood to recess this open session and go into a closed executive session for a period of not more than 30 minutes to discuss matters that would be deemed privileged in the attorney-client relationship and to include the Board of County Commissioners and County Counselor Jim Emerson.

Yeas: Commissioners Moody, Murphy and Wood

Nays:

Present but not voting:

Absent or not voting:

The motion prevailed.

The Commissioners went into Executive Session at 11:10 AM and reconvened the Open Session at 11:21 AM with no action taken except to go back into open session.

Item Two: Commissioner Murphy requested an executive session for a period of not more than 10 minutes to discuss personnel matters involving Non-Elected Personnel and to include the Board of County Commissioners and County Counselor Jim Emerson.

On motion (16-351) of Commissioner Murphy and the second of Commissioner Moody to recess this open session and go into a closed executive session for a period of not more

Board of Crawford County Commissioners

than 10 minutes to discuss personnel matters involving Non-Elected Personnel and to include the Board of County Commissioners and County Counselor Jim Emerson.

Yeas: Commissioners Moody, Murphy and Wood

Nays:

Present but not voting:

Absent or not voting:

The motion prevailed.

The Commissioners went into Executive Session at 11:22 AM and reconvened the Open Session at 11:31 AM with no action taken except to go back into open session.

UNDER THE HEADING FUTURE BUSINESS AND ANNOUNCEMENTS

FUTURE BUSINESS:

ANNOUNCEMENTS:

Item One: September 27, 2017 – Hospital Board meeting at Girard Medical Center at 5:30 PM to discuss ATC.

Item Two: September 28, 2016 – 1:30 PM Opening of Bids for Bridge Replacement Project, Bridge No 690 in the Office of the County Commission of Crawford County, Kansas in the courthouse at Girard, Kansas.

Item Three: September 29, 2016 – 11:30 AM Luncheon at Kansas Crossing on the casino floor.

Item Four: October 4, 2016 – 2016 State of the City Address at 7:30 AM at Memorial Auditorium, 503 N Pine, Pittsburg, Kansas. All three Commissioners will be in attendance.

UNDER THE HEADING MOTION TO ADJOURN MOTION TO ADJOURN

Item One: Adjournment

On the motion of Commissioner Moody and the second of Commissioner Murphy to adjourn the [September 27, 2016](#) meeting of the Board of Crawford County Commissioners at 11:46 AM and to reconvene at the next regularly scheduled time with open doors.

Yeas: Commissioners Moody, Murphy and Wood

Nays:

Present but not voting:

Absent or not voting:

The motion prevailed.

In Testimony whereof, I have hereunto set my hand and caused to be affixed my official seal and submitted these minutes for the approval of the Board of Crawford County Commissioners.

Board of Crawford County Commissioners

Don Pyle
County Clerk

<>

This submission completed at the Crawford County Courthouse in Girard.
[Taken BKW 9/27/16 11:46 AM/amended BKW 9/29/16 11:30 AM](#)